

NK 3620

.B4

1914





Art Alphabets and Lettering

AN INEXHAUSTIVE COLLECTION OF
THE MOST USEFUL AND ARTISTIC
LETTERING FOR THE USE OF

Painters, Designers, Engravers
Commercial Artists, Show Card Writers
Schools and Colleges



Modern and Original Alphabets
as well as all Standard Favorites for Advertisements
Posters, Inscriptions, Memorials, Resolutions, etc.

J. M. Bergling
By J. M. BERGLING
DESIGNER AND ENGRAVER
1254 ROSEDALE AVE., CHICAGO

NK 3620
B4
1914

COPYRIGHTED BY
J. M. BERGLING
1914

PRINTED BY
BLAKELY-OSWALD PRINTING CO.
CHICAGO, ILL.



APR 10 1914

\$2.50

©CIA369753

no.

*The demand
for* "ARTISTIC AND GITCHY"
LETTERING

*has never before been
so great*

Engravers-Designers
and Artists

*are continually looking for
NEW NOVELTIES
in this
interesting Art.*

Attractive Display
Lettering

*will always bring
satisfactory results
to the*

ADVERTISER
and
admiration

*from the
ART CRITIC*

B

PUBLICATIONS *By* J. M. BERGLING

1254 ROSEDALE AVENUE, CHICAGO, U. S. A.

ART MONOGRAMS AND LETTERING

SEVENTH EDITION

The Most Useful and Artistic Book of the Kind
Published in America. For the use of *Artists*,
Designers, *Engravers*, Sign Writers, Schools
and Colleges. 104 Plates, size 8x11. \$4.25

ART ALPHABETS AND LETTERING

Being the second part of "Art Monograms and
Lettering." Brimful of Latest Styles and Original
Lettering, as well as the Most Useful of
Standard Alphabets. 64 Plates. Bound. \$2.50

ORNAMENTAL DESIGNS AND ILLUSTRATIONS

An Encyclopedia of Subjects in a Condensed
Form for Artists and Engravers. Only Book of
the kind in the Market. 68 Plates, 8x11. \$2.50

HERALDIC DESIGNS AND ENGRAVINGS

Over 2000 Cuts and Engravings, many being
done by some of the Greatest Artists in the
World. Book Plates and the Essentials in
Heraldry. A Handy Book for the Studio and
Library. 72 Plates, 8x10½. \$3.00.

Stationers Script

A B C D E F G H I
J K L M N O P Q R
S T U V W X Y Z
a b c d e f g h i j k l m n o p q r s t u v w x y z &
1 2 3 4 5 6 7 8 9 0

SPENCERIAN SCRIPT

A B C D E F G H I
a b c d e f g h i j k l m n o p q r s t u
v w x y z & A B C D

AMERICAN ROUNDHAND SCRIPT

A B C D E F G
H I J K L M N
O P Q R S T U
abcd vwxyz
klmnopqrstuvwxyz

MODERN FRENCH SCRIPT

A B C D E F G
H I J K L M
N O P Q R S T
U V W X Y Z

French Ronde.

abcdefghijklmnopqrstuvwxyz
A B C D E F G H I J K
L M N O P Q R S T U
1 2 3 4 5 6 7 8 9 0
abcdefghijklmnopqrstuvwxyz
La patience est la clef de la jouissance?

German Gothic

A B C D E F G H I J
K L M N O P Q R S T U
abcdefghijklmnopqrstuvwxyz
vwxyz.

German Capitals and Small Letters for Engrossing

A B C D E F G H
I K L M N O P Q
R S T U V W X Y
a b c d e f g h i j k l m n o p q r s
t u v w x y z . &

German Script

A L L L L L L L L L
J K L M N O P Q R
S T U V W X Y Z
a b c d e f g h i j k l m n o p q r s t u v w x y z

Copperplate Engravers Alphabets.

DÜRER 16th CENTURY GOTHIC

A B C D E F G H I J K L M N O P Q R S T U
a b c d e f g h i k l m n o p q r s t u v w x y z
W X Y

GERMAN GOTHIC

A B C D E F G H I J K L M N O
P Q R S T U V W X Y Z
a b c d e f g h i k l m n o p q r s t u v w x y z

ENGLISH GOTHIC LETTERS

16th CENTURY.

A B C D E F G H I J K L M N O P Q R S
T U V W X Y Z ENGLISH 14 Cent.

UNCIAL GOTHIC INITIALS

A B C D E F G H I J K L M N O P Q
R S T U V W X Y Z 14th GERMAN

GERMAN GOTHIC CAPITALS

A B C D E F G H I K
L M N O P Q R S T U
V V X Y Z

MODERN GERMAN

A B C D E F G H I K L M
N O P Q R S T U V W X Y Z
abcdefghijklmnopqrstuvwxyz

UNCIAL GOTHIC INITIALS

A B C D E F G H I J K
O P Q R S T U V W N
P Q X Y Z B

Modern Gothic (Old English),

A B C D E F G H I K
L M N O P Q R S T U

Engravers Old English

A B C D E F G
H I J K L M N
O P Q R S T
U V W X Y Z

JB

ab cdefg h i j k l m n
o p q r s t u v w x y z. a h k n &

Memorial G-B Comptoir

Bordered Block

A B C D E F G H K L M N
O P Q R S T U V W X Y Z.
COMPREHENSIVE BENEFICENCE

Advanced Ideas and
Various Uses Suggested for this Beautiful Series

SPURRED ROMAN

A B C D E F G H I J K L M N O
P Q R S T U V W X Y Z & \$, . : ;
a b c d e f g h i j k l m n o p q r s
1 2 3 4 5 t u v w x y z 6 7 8 9 0

Heavy top and bottom Block

A B C D E F G H I J K L M N O P Q R S T U
\$ 1 2 3 4 5 V W X Y Z & 6 7 8 9 0
a b c d e f g h i j k l m n o p q r s t u v w x y z

MODERN LETTERS

A B C D E F G H I J K L M
N O P Q R S T U V W X Y Z

A B C D E F G H I K L M
N O P Q R S T U V W X Y Z

ROMAN ORNAMENTED

A B C D E F G H I J K
L M N O P Q R S T U V
1 2 3 4 5 W X Y Z 6 7 8 9 0

A B C D E F G H I K L M N O P
Q R S T U V W X Y Z

Antique Roman

A B C D E F G H

J K L M N O P R

S T U V W X Y Z

abcdefghijklmnop

pqrstuvwxyz

1 2 3 4 5 6 7 8 9

Block.

A B C D E F G H

K L M N O P Q R

S T U V W X Y Z

Angessächsisch.

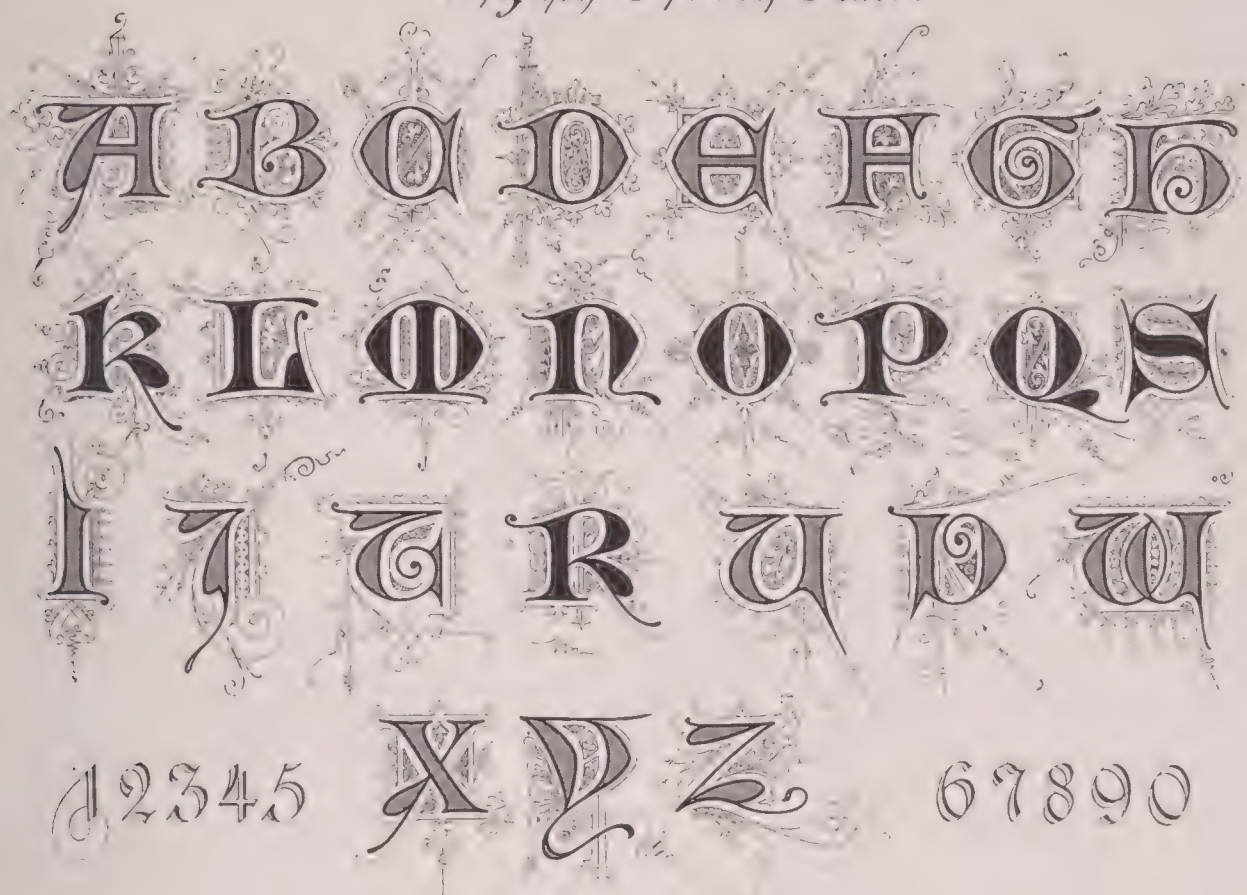
A B C D E F G H I
K L M N O P Q R
S T U V W X Y Z

a b c d e f g h i k l m n o
p q r s t u v w x y z ż.

1234567890. 1234567890.

A B C D E F G H I
K L M N O P Q R
S T U V W X Y Z

English Church Text.



Gothic modified.

A B C D E F G H I K

L M N O P Q R S

ab G V W X Y Z A cd

efghijklmnopqrstuvwxyz

Modern gothic Initials



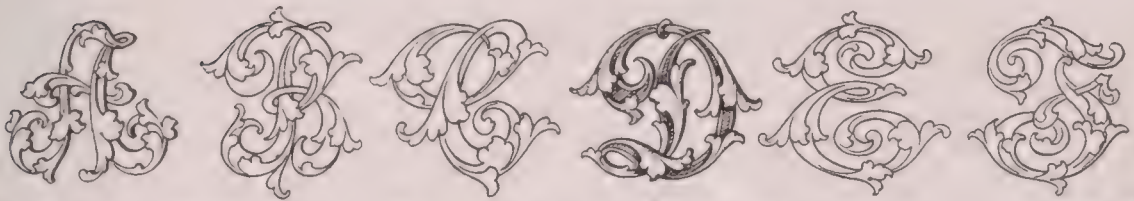
Ornamented French Script.



Deutsches Renaissance - Alphabet.



Leaf Cipher-Letters.



STUDIES IN RIBBON LETTERS.

A B C D E F G H

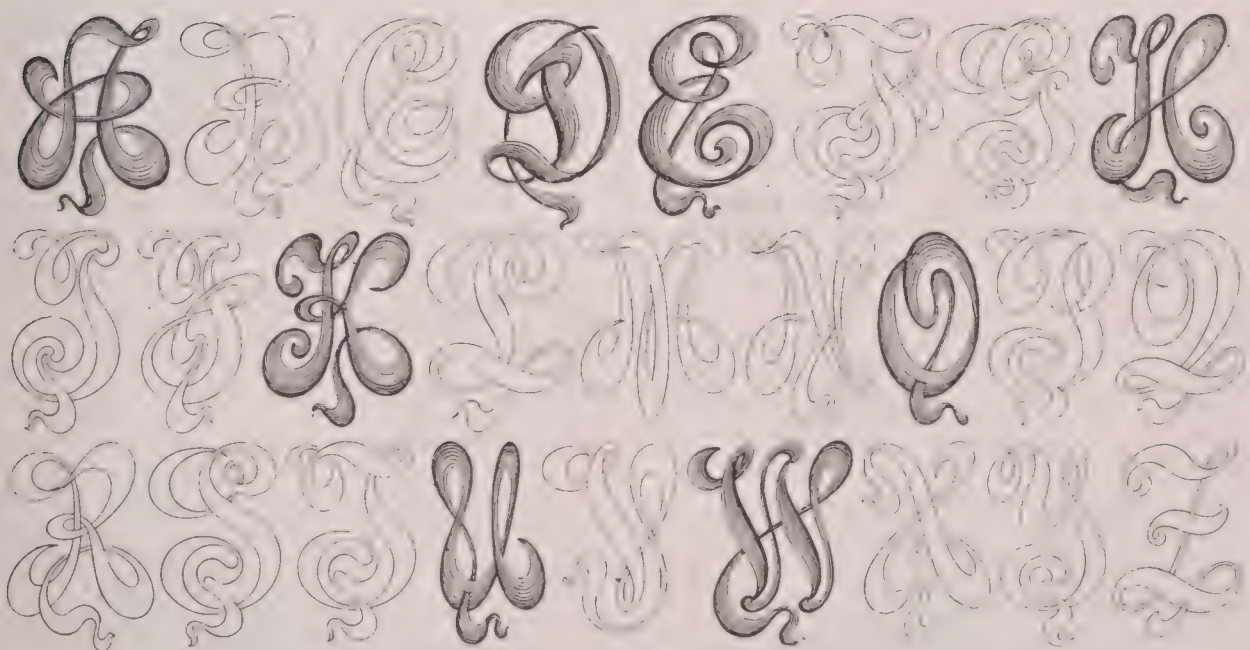
I J K L M N O P Q

R S T U V W X

abcde fgh i j k l m n o

pqrstuvwxy z

B



MODERN ROMAN.

ABCDEFGHIJKLM
NOPQRSTUVWXYZ

INTERNATIONAL
EXPOSITION

ABCDEFGHIJKLMN
OPQRSTUVWXYZ

ABCDEFGHIJKLMNOP
QRSTUVWXYZ &

ARCHITECTS ALPHABETS.

ABCDEFGHIJKLM
MNOPQRSTUVWXYZ
abcde XYZ & E fghij
klmnopqrstuvwxyz

ABCDEFGHIJKLM
MNNOPPPQRRSS
abc TU VWXY Z def
ghijklmnopqrstuvwxyz.&

ABCDEFGHIJKLM
NOPQRSTUVWXYZ

Engrossing Script

A B C D E F G H I
K L M N O P Q R
S T U V W X Y Z
abcdefghijklmnopqrstuvwxyz
1234567890.

MODIFIED CURSIVE

A B C D E F G H I
K L M N O P Q R S T
U V W X Y Z M N
abcdefghijklmnopqrs
Paris stuvwxyz & Wien
London 1234567890 Berlin

MODERN ALPHABETS

A B C D E F G H I J K

L M N O P Q R S T

U V W X Y Z

abcdefghijklmnopqrstuvwxyz

A B C D E F G H I

J K L M N O P Q R S

T U V W X Y Z

abcdefghijklmnopqrstuvwxyz

1234567890

von F. Schweimanns.

MODERN ALPHABETS

A B C D E F G H I

1914

K L M N O

P Q R S T U V

A B C D E F G H

I J K L M N O P Q R

S T U V W X Y Z

abcdefghijklmnopqrstuvwxyz

Deutsche Schrift XVII Jahrh.

A B C D E F G H
I K L M N O P Q R
S T U V W X Y Z
abcdefghijklmnopqrstuvwxyz

Italian Alphabets. 15th & 16th Centuries.

A B C D E F G
H I K L M N O
P Q R S T U V
W X Y Z

Revised by
J.M. Bergling

Roman Italics

A B C D E F G H I J
K L M N O P R S T U
abcde V W X Y Z fghij
klmnopqrstuvwxyz.

Romany & Americus.
Florence 1714 — 1914 Italy.

CINCINNATI. B BARCELONA.

Italic Capitals and Small Letters

A B C D E F G H I J K
L M N O P Q R S T U
abcd V W X Y Z efghij
klmnopqrstuvwxyz. &

Round Hand, for Headings and Display

A B C D E F G H I J
K L M N O P Q R S
T U V W X Y Z
abcdefghijklmnopqrstuvwxyz
abcdefghijklmnopqrstuvwxyz:

Deutsche Schrift.

A B C D E F G H I
K L M N O P Q R
S T U V W X Y Z.
abcdefghijklmnopqrstu
vwxyz 67890

Italien Alphabet a.d. XVI.

A B C D E F G H

I K L M N O P Q R

S T U V X Y.

abcdefghijklmnopqrst

uvw Waldeck-Pyrmont. xyz.

Alphabet in japanese Form

A B C D E F G H I

J K L M N O P Q R

S T U V W X Y Z

abcdefghijklmnopqrstuv

wxyz.

B

Dr. George Hungerford Phelps,
 Miss Margery Burdock
 announce their marriage
 Thursday, the third of July
 Nineteen hundred and thirteen
 in the City of New York

You are cordially invited by the
 Chicago Examiner
 to attend a formal opening of the new
 Hearst Building
 Tuesday evening, (Election Night) November fifth
 Reception from 8:00 to 12:00 P. M.

CHESTER TEXT

MR. AND MRS. CHARLES DANIEL HELLS
 ANNOUNCE THE MARRIAGE OF THEIR DAUGHTER
 PRUDENCE HELLES
 to
 MISS GAIL KINSLEY
 NINETEEN HUNDRED AND THIRTEEN
 CHARLES CITY, IOWA

ASTOR TEXT

COPYRIGHTED BY THE NATIONAL ASSOCIATION OF SAND C.P. ENGRAVERS.

Mr. and Mrs. Detrich Severs
 request the honor of your presence
 at the marriage of their daughter
 Matilda Margaret
 to
 Mr. Albert Peterson
 Oak Park, Illinois

Script, Exemplified.

Columbia Steel & Shustring Co.
Atlas Assurance Company Limited

The American League Base Ball Club
of Chicago

requests the honor of your presence at

The Opening Game of the Season
Thursday afternoon, April 18th 1907

at three o'clock

American League Ball Grounds
Chicago

Gage Brothers & Co.
INCORPORATED.

Chicago,

129-130-131 Michigan Ave.

New York,

Rondé, Exemplified

The Trustees and Faculty
of
The University of Pittsburgh

have the honor to invite

Mr and Mrs John M. Bergling

to be present at the celebration of the

One hundred and twenty-fifth Anniversary

of the University

on Tuesday, Wednesday and Thursday

February twenty-seventh, twenty-eighth and twenty-ninth

Nineteen hundred and twelve

Chevalier Bayard Commandery

No. 52 Knights Templar

Chicago

Extends Knightly Courtesies

and requests the presence of yourself and ladies

at its Reception

Example of shaded Old English

Seventh Annual Banquet
of
The Chicago Association of Commerce
Saturday evening
the twenty - eighth of October
one thousand nine hundred and eleven
at six-thirty o'clock
Hotel Sherman

National Mutual Church Insurance Co.
of Chicago, Illinois.

Example of shaded Ronde

The Hotel Sherman Management
announces the opening of the
Second Series of Colissions
on Wednesday evening, September tenth
at eleven o'clock

Example of shaded German Text. ..

Fifth
Annual Banquet
of the
Traffic Club of Chicago
Tuesday, February twentieth
Nineteen hundred and twelve
Hotel La Salle

Centennial Anniversary
of the Birth of
Stephen A. Douglas



New Art Initials

A B C D E F G H I K

172

L M N O P R S T U V

W X Y Z

B

A B C D E F G H I
K L M N O P Q R S
T U V W X Y Z

New Art Initials

A B C D E

A B C D E

F G H I K

G H O P R

L M N O P

Q R S T U

V W X Y Z

H I K L M

W Y Z

S T U V X

Bergling
1914

New Classic.

A B C D E F G H I

K L M N O P Q R

S T U V W X Y Z

a b c d e f g h i j k l m n

o p q r s t u v w x y z.

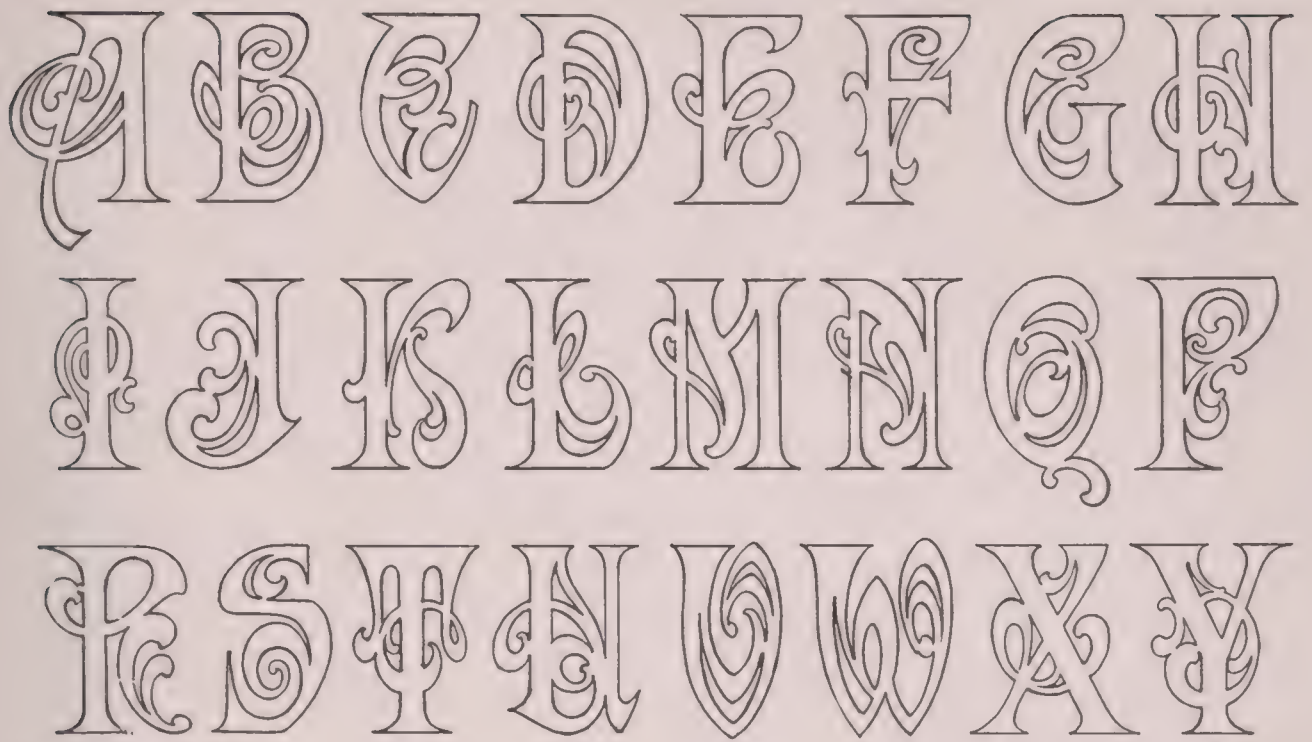


Remember the
New Maine

R
1914

The Classic
First

NEW ART LETTERS



J. M. BERGLING. 1914



St. Patrick's Day
Greetings

FROM THE SOUTH TO THE NORTH,
FROM THE EAST TO THE WEST;
HERE'S TO THE GREEN ISLE
THAT THE IRISH LOVE BEST!

Yours
O'Brian

The powers of
the Opal.

October's child is born
for woe
And life's vicissitudes
must know;
But lay an opal on
her breast
And hope will lull the
woes to rest.

OUR LIVES —
SHOULD BE LIKE UNTO
THE SUMMER GLOWS,
WITH PROMISE AND LIKE
THE AUTUMN RICH WITH
GOLDEN SHEAVES OF WORKS
AND DEEDS RIPENED
ON THE FIELD.

The place

that does contain my
Books, my best compa-
nions, is to me a glorious
Court where hourly I
hold converse with
Old Sages and
Philosophers.

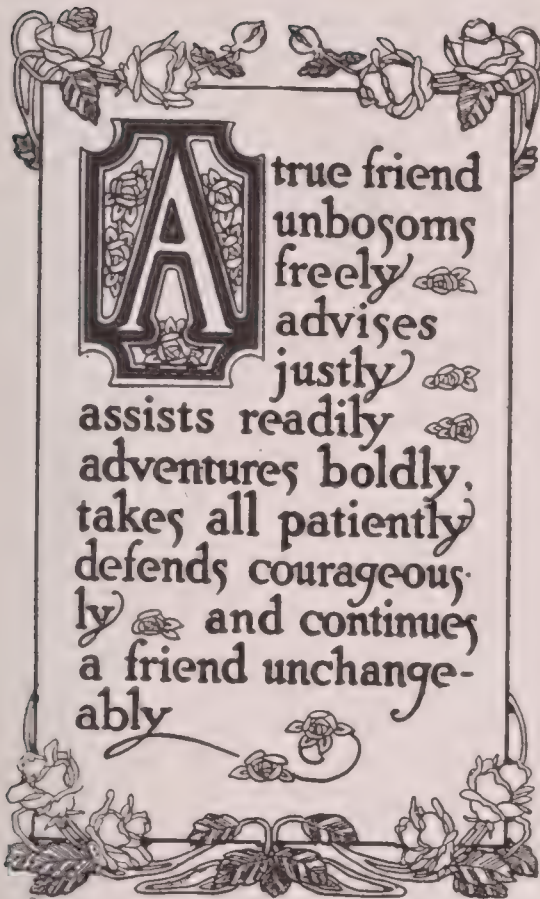
JB

The selection of
appropriate Styles
of Lettering
for whatever purpose
should be as important
as the
Artistic Treatment
it may receive
John W. Bergling.

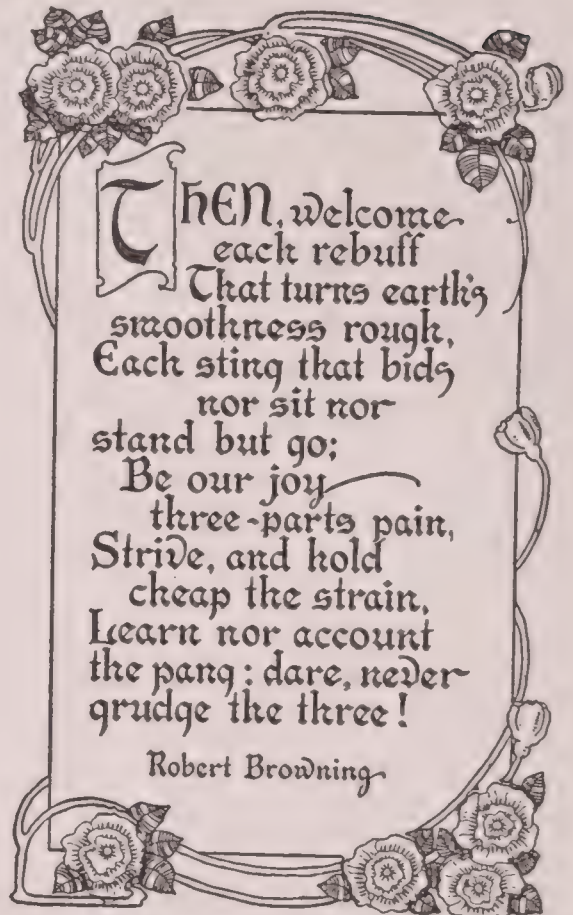
TONGUES
IN TREES
BOOKS
IN THE
RUNNING BROOKS
SERMONS IN
STONES AND
GOOD IN EVERY
THING W.S

THE MOST
MANIFEST
SIGN OF
WISDOM IS
CONTINUED
CHEERFULNESS
MONTAIGNE

God Keep You Safe
God keep you safe,
my love,
All through the night;
Rest close in His en-
circled arms
Until the light.
My heart is with you
as I kneel to pray,
Good night! God
keep you in His care
always.
Mary Wigman.

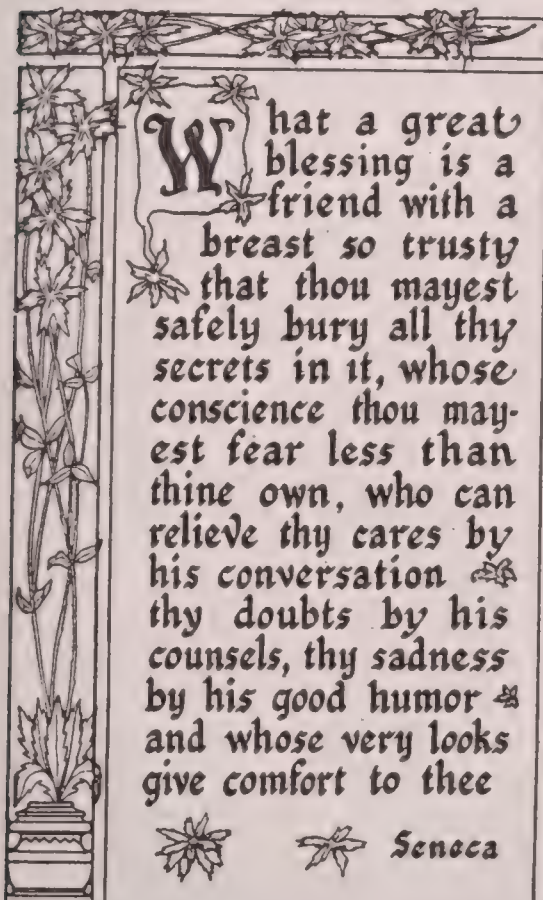


A true friend
unbosoms
freely
advises
justly
assists readily
adventures boldly,
takes all patiently
defends courageously
and continues
a friend unchange-
ably



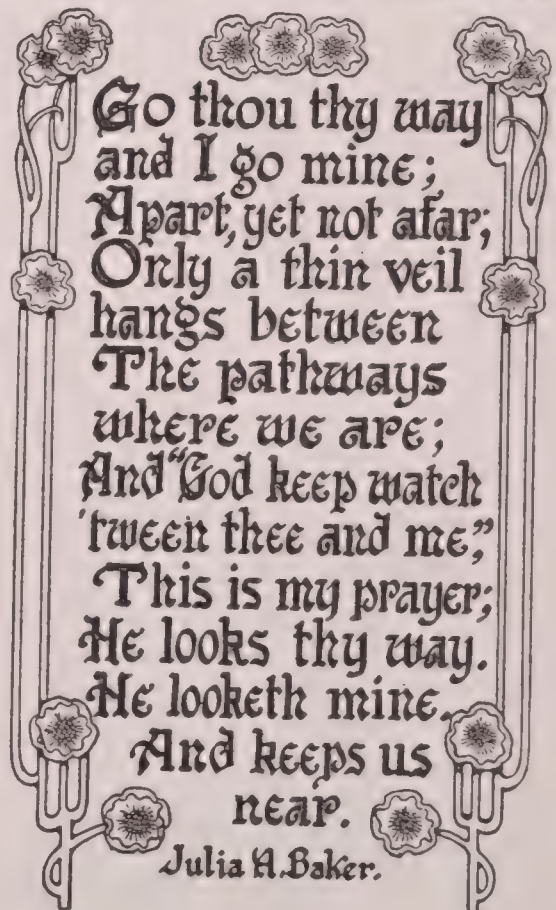
THEN, welcome
each rebuff
That turns earth's
smoothness rough,
Each sting that bids
nor sit nor
stand but go;
Be our joy
three-parts pain,
Strive, and hold
cheap the strain,
Learn nor account
the pang; dare, never
grudge the three!

Robert Browning



What a great
blessing is a
friend with a
breast so trusty
that thou mayest
safely bury all thy
secrets in it, whose
conscience thou may-
est fear less than
thine own, who can
relieve thy cares by
his conversation
thy doubts by his
counsels, thy sadness
by his good humor
and whose very looks
give comfort to thee

Seneca



Go thou thy way
and I go mine;
Apart, yet not afar;
Only a thin veil
hangs between
The pathways
where we are;
And "God keep watch
'tween thee and me,"
This is my prayer;
He looks thy way.
He looketh mine.
And keeps us
near.

Julia A. Baker.

WRITE
your name
with love,
mercy and
kindness on
the hearts of
those about
you and you
will never
be forgotten

THAT MAN
IS IDLE
WHO DOES
LESS THAN
HE CAN

HE THAT
CAN HAVE
PATIENCE
CAN HAVE
WHAT HE
WILL



FRANKLIN

THE
SILVER LINING
THE INNER SIDE
OF EVERY CLOUD
IS EVER BRIGHT.
AND SHINING;
I THEREFORE TURN
MY CLOUDS ABOUT,
AND ALWAYS WEAR
THEM INSIDE OUT,
TO SHOW THE SIL-
VER LINING.

JEWELRY ENGRAVERS INSCRIPTIONS.

In loving memory
of
Rev. Henry Gould,
Pastor of
St. John's Church
Apr. 7, 1915.

PRESENTED TO
THEO. E. JACKSON
BY HIS MANY
FRIENDS AND ADMIRERS
ON THE
BOARD OF TRADE
CHRISTMAS 1914.

To
Theo. P. Butler
in appreciation of his
25 years
faithful services
with the
Chas. Whiting Co.
Aug. 4, 1916.

James Adolph Busch
from
George R. Haupt,
as a token of
appreciation and gratitude.
December, 1915.

Presented to
Frank M. Thomson
BY
THE BOARD OF IMPROVEMENTS
OF LOCAL CHICAGO
as a token of esteem
and appreciation
November 12th 1915.

MB

PRESENTED TO
CHARLES D. HASTING
PRESIDENT
CITY ATHLETIC CLUB
BY
ADMIRING MEMBERS
CHRISTMAS 1917.

ENGRAVERS' INSCRIPTIONS ON SILVER-PLATE ETC.

Presented by
The H. Drews Mfg' Co.
to

John R. Gibson
in appreciation
of his twenty-five years faithful services
August 24, 1915.

The Wilson Trophy
TO BE COMPETED FOR
AT THE ANNUAL REGATTA OF THE
Bevozey Yacht Club
TO BE WON THREE TIMES
TO BECOME THE PERMANENT PROPERTY OF
THE WINNER

JB

Presented to

WILLIAM ATKINSON

By his colleagues in Boston

ON HIS RETIREMENT FROM THE

Phoenix Insurance Company

and after 48 years service in insurance business
as a token of their friendship and regard

November 17th 1915.

MB

Presented to

John B. Watson

by his friends and admirers
on his retirement as president of the

Meadow Country Club

as a token of their esteem and appreciation

Chicago Oct. 5, 1914.



DR. CHARLES M. BENTON
GREETING!

THE DETROIT BANKERS SOCIETY
Has the honor to present to you this copy
of the following resolutions

WHEREAS, with the progress of civilization
there have appeared in every walk of life men who,
by their energy and devotion to their work have
become leaders among their fellow men, and

WHEREAS Etc.

MB

Prof. John Maurice Dawson
The accompanying CUP is presented
by the
ALUMNI ASSOCIATION
of the
COLLEGE OF MEDICINE
of the
UNIVERSITY OF PENNSYLVANIA


(M)ODERN ART.


THE COLLEGE HOP
AT THE HALL


TANGO AND THE OTHERS

GRAND SOKER TONIGHT

Don't fail to show up

CONCERT 

 PROGRAM

THE FINE ARTS CLUB
IN CHICAGO 

Modern Alphabets

ABCDEFGHIJKLMN OPQRST
abcde fgh UVWXYZ hiklmnop
qrstuvwxyz ß edpnr

ABCDEFGHIJKL MNOPQR
abcde f STUVW XYZ- ghiklm
nopqrstuvw xyz-

ABCDEFGHIJKLMN OPQRST
abcde fgh UVWXYZ ijklmnop
qrstuvwxyz-123456

ABCDEFGHIJKLMN OPQRST
abcde fghij UVWXYZ klmnopqr
stuvw xyz-123456789

MODERN ALPHABETS

A B C D E F G H I J K L
M N O P Q R S T U V W
a b c d e f W X Y Z z g h i k l n
m o p q r s t u v w x y z · 1 2 3 6 8

A B C D E F G H I J K L M
N O P Q R S T U V W
a b c d e f W X Y Z · g h i j k l m
n o p q r s t u v w x y z · 1 2 6 7

MODERN ALPHABETS

A B C D E F G H I
R L M N O P Q R
S T U V W X Y Z
a b c d e f g h i j k l m n
o p q r s t u v w x y z

A B C D E F G H I K
L M N O P Q R S T U
V W X Y Z · a b c d e f
g h i j k l m n o p q r s t
2 3 4 u v w x y z 5 6 7.

Poster and Sign Card Alphabets

A B C D E F G H I J K
L M N O P Q R S T U
V W X Y Z. a b c d e f
g h i j k l m n o p q r s t u
Four. v w x y z. Mode

A B C D E F G H I J K L
M N O P Q R S T U V W X Y Z
a b c d e f g h i j k l m n o p q r s t u
v w x y z. 1 2 3 4 5 6 7 8 9 0.
Modern Brush Letters

Poster and Sign Card Alphabets

ABCDEFGHIJKLM
NOPQRSTUVWXYZ
abcdefghijklmnop
qrstuvwxyz.

1234567890
ABCDEFGHIJKLM
NOPQRSTUVWXYZ
abcdefghijklmnopq
rstuvwxyz.!

Poster and Sign Card Alphabets

A B C D E F G H I J K L M N
O P Q R S T U V W X Y Z
a b c d e f g h i k l m n o p q r s
t u v w x y z ··· 1 2 3 4 5 6 7 8 9 0.

A B C D E F G H I J K L M
N O P Q R S T U V W X Y Z
a b c d e f g h i j k l m n o p
q r s t u v w x y z : 1 2 3 4 5 6 7

Modern Painters & Designers Alphabets

A B C D E F G H I J
K L M N O P Q R S T
ab UVW XYZ cd
efghijklmnopqrs
&!Wtuvwxyz RT

A B C D E F G H I J K L
M N O P Q R S T U V
abcde W X Y Z fghijk
lmnopqr ! stuvwxyz

À Á Â Ã Ä Å Æ Ç È
É Ê Ë Ì Í Î Ï Ñ Ò Ó
Ô Õ Ö × Ø Ù Ú
À Á Â Ã Ä Å Æ Ç È

A B C D E F G H I J K L M N
O P Q R S T U V W X Y

A B C D E F G H J
K L M N O P Q R S
T U V W X Y Z

MODERN ALPHABETS

A B C D E F G H J K
L M N O P Q R S T U
a b c · D W X Y Z · d e f
g h i j k l m n o p q r s t u v
w x y z · 1 2 3 4 5 6 7 8 9 0 ·

A B C D E F G H J K L
M N O P Q R S T U V
W X Y Z · a b c d e f g h i
j k l m n o p q r s t u v w x
y z · 1 2 3 4 5 6 7 8 9 0 ·

A B C D E F G H I J K L M
N O P Q R S T U V W X Y Z

A B C D E F G G H J R L
M N O P Q R S T U V
3 4 5 W X Y Z · 6 7 8
a b c d e f g h i j k l m n o
p q r s t u v w x y z B 1 2

A B C D E F G H I K
L M N O P Q R S T
U V W X Y Z

A B C D E F G H I
K L M N O P Q R
S T U V W X Y Z

A B C D E F G H J
K L M N O P Q R
S T V W Y X Z

MODERN ALPHABETS

A B C D E F G H I J K L M
N O P Q R S T U V W X Y Z
a b c d e f g h i j k l m n o p q r s
t u v w x y z

A B C D E F G H I J K L M
N O P Q R S T U V W X Y Z
a b c d e f g h i j k l m n o p q r s
t u v w x y z

MODERN ALPHABETS

A B C D E F G H

I J K L M N O P R

S T U V W X Y Z

a b c d e f g h i j k l m n o

23 p q r s t u v w x y z 45

A B C D E F G H I J K

L M N O P Q R S T U

V W X Y Z

a b c d e f g h i j k l m

n o p q r s t u v w x y

New Gothic

A B C D E

F G H I K

L M N O P

Q R S T U

V W X Y Z

von F Schweimanns

RUSTIC ALPHABET.

A B C D E


F G H I

K L M N O

P Q R S T U

V W X Y Z

abcdefghijklmnopqrstuvwxyz

rstuvwxyz: 



ORNAMENTAL INITIALS.



Modes Alphabets for Jewels Engravers

A B C D E F G H I J K L M N
O P Q R S T U V W X Y Z

Cipher Letters

A B C D E F G H I J K L M
N O P Q R S T U V W X Y Z

New Antique

A B C D E F G H I J K L M N O P
Q R S T U V W X Y Z JB

New French

A B C D E F G H I J K L M N
O P Q R S T U V W X Y Z

HEAD-LINERS

The 50th Anniversary
ACADEMY OF SCIENCE

Geographical Society
GRAND CONVENTION.

ANNUAL EXHIBITION
OF THE CHISEL AND PALLET CLUB 1914
Studio Building

JB

THE NATIONAL MOTOR SHOW
COLISEUM FEB. 1914.

Novelty-Letter Suggestions

Annabelle Bertha

Dorothy

Maris ANES Esther

Florence GEORGE Hedvig

Juliet RR Louise

Roy Katherine EM

MERICLES PERIGLAT

GREEK ALPHABET

CHARACTER	NAME	CHARACTER	NAME	CHARACTER	NAME
Α α	Αλφα <i>Alpha</i>	Ι ι	Ἰῶτα <i>Iota</i>	Ρ ρ	Ῥ ῶ <i>Rho</i>
Β β	Βῆτα <i>Beta</i>	Κ κ	Κάψα <i>Kappa</i>	Σ σ	Σίγμα <i>Sigma</i>
Γ γ	Γάμμα <i>Gamma</i>	Λ λ	Λάμβδα <i>Lambda</i>	Τ τ	Ταυ <i>Tau</i>
Δ δ	Δέλτα <i>Delta</i>	Μ μ	Μῦ <i>Mu</i>	Υ υ	Ῥψιλὸν <i>Upsilon</i>
Ε ε	Ἐψιλὸν <i>Epsilon</i>	Ν ν	Νῦ <i>Nu</i>	Φ φ	Φί <i>Phi</i>
Ζ ζ	Ζῆτα <i>Zeta</i>	Ξ ξ	Ξί <i>Xi</i>	Χ χ	Χί <i>Chi</i>
Η η	Ἡτα <i>Eta</i>	Ο ο	Ὅμικρον <i>Omicron</i>	Ψ ψ	Ψί <i>Psi</i>
Θ θ	Θῆτα <i>Theta</i>	Π π	Πί <i>Pi</i>	Ω ω	Ὠμέγα <i>Omega</i>

The Greek Alphabet, written

A, a B, b Γ, γ Δ, δδ Ε, ε Ζ, ζ ζ Η, η Θ, θ
Ι, ι Κ, κ Λ, λ λ Μ, μ Ν, ν Ξ, ξ Ο, ο Π, π
Ρ, ρ Σ, σσ Τ, τ τ Υ, υ Φ, φ Χ, χ Ψ, ψ Ω, ω



The RUSSIAN Alphabet.

Аа Бб Вв Гг Дд Ее Жж Зз Ии Йй Кк
Лл Мм Нн Оо Пп Рр Сс Ттш Уу Фф Хх
Цц Чч Шш Щщ Ъъ Ыы Ьь Ъъ Ээ Юю
Яя Ѡѡ Ѣѣ

Аа Бб Вв Гг Дд Ее Жж Зз Ии Йй Кк
Лл Мм Нн Оо Пп Рр Сс Ттш Уу Фф Хх
Цц Чч Шш Щщ Ъъ Ыы Ьь Ъъ Ээ Юю
Яя Ѡѡ Ѣѣ

H 295 84





HECKMAN
BINDERY INC.



SEP 84



N. MANCHESTER,
INDIANA 46962

LIBRARY OF CONGRESS



0 033 261 230 A